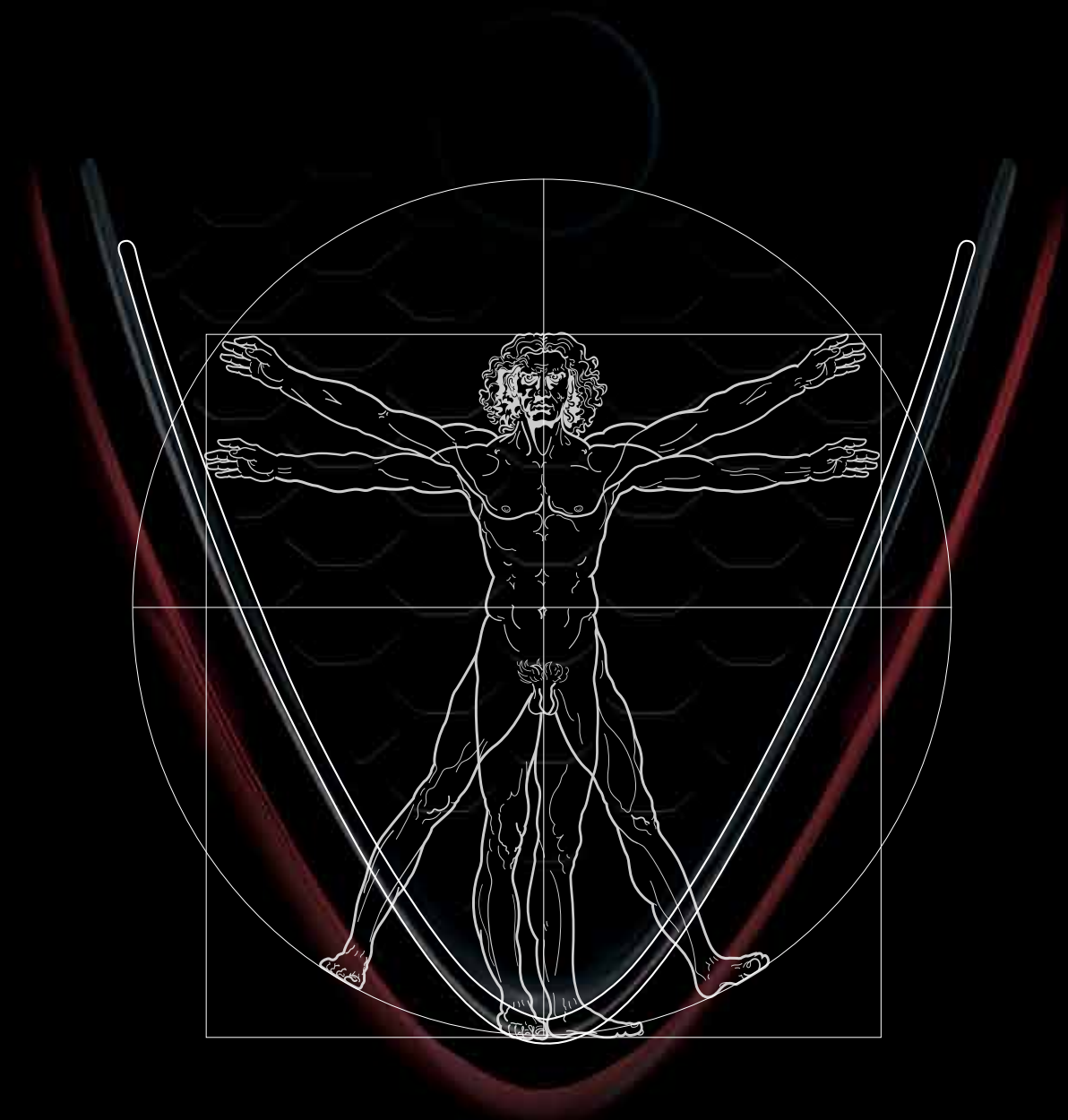




GIULIA



A NEW ERA A NEW PARADIGM A NEW ALFA ROMEO

Alfa Romeo has always taken a unique and totally original approach to designing its automobiles: it is the point of convergence between design and passion, between a love for the most cutting-edge technology and a strong instinct to inspire emotions. Today, Alfa Romeo is writing a new chapter in its history, introducing a future where once again the driver is at the centre of the design. Here is the new Alfa Romeo Giulia.

CHANGE THE HORIZON WITH A NEW PERSPECTIVE

Simplicity, formal balance and harmonious surfaces. A unique and unmistakable appearance, represented by the trilobe. This is the Alfa Romeo style. The Giulia embodies that style. Beautiful and functional: with balanced weight distribution and rear-wheel drive, the engine and mechanics between the two axes, all its power is transferred to the road. The Giulia's surfaces are defined by light. Its profile is power and motion.

DYNAMIC POWER

HIGH PERFORMANCE MINDSET

Every detail of the Alfa Romeo Giulia was designed to give the best performance, also in terms of efficiency. The engines, all turbo-charged and built entirely in aluminium, offer an unprecedented balance of power and respect for the environment and come standard with 8-speed automatic transmission. With the Giulia, emotion also takes the lead.



0-100km/h **6,6"**



TOUCH TECHNOLOGY

TURN YOUR TRIP INTO A JOURNEY



The new Alfa™ DNA lets the Giulia vary the dynamic responses and customise them according to your driving style and travelling conditions.

Dynamic: favours performance and responsiveness. The steering response is more accurate, the braking more responsive and the electronic control systems leave space for the enjoyment of a sporty drive.

Natural: ideal for both city streets and highways. The dynamic behaviour is geared to comfort and efficiency.

Advanced Efficiency: A new mode that allows you to maximise energy savings and minimise emission levels.

The Alfa™ DNA also interacts with the Alfa™ Active Suspension (if available): the shock absorbers adapt to the desired driving style, becoming more rigid for a sporty ride, or softer, for a more comfortable drive.

STUNNING ACOUSTICS

THE GRAVITY OF SOUND

harman / **kardon**
by HARMAN

The perfection of the Sound Theatre by Harman Kardon® exalts the sensations you feel behind the wheel of the Giulia. 900 W of power, 14 speakers (including subwoofer), 12-channel amplifier and Logic 7® technology. An exciting digital surround sound effect, full of depth and detail. In the Giulia, sound becomes almost material.



Fabian Oefner
Black Hole, 2013

OPTIMAL WEIGHT DISTRIBUTION

BALANCE HAS NO COMPROMISES

This confirms the great commitment to aerodynamic development, and the constant and exhaustive work conducted in the wind tunnel. This research made it possible to develop and adopt the most advanced technical solutions: in particular, the streamlined design of the base that improves the airflow under the car and the aerodynamic flow management at the rear help reduce turbulence, improving dynamic efficiency.



Maximum attention to detail in every design feature gives the car its perfect balance. In fact, the rear-drive combined with the longitudinal front position of the aluminium engine and the carbon transmission shaft ensure an optimal weight distribution along the frame.

50 50

DRIVING EXCITEMENT

10,8_m
Turning circle

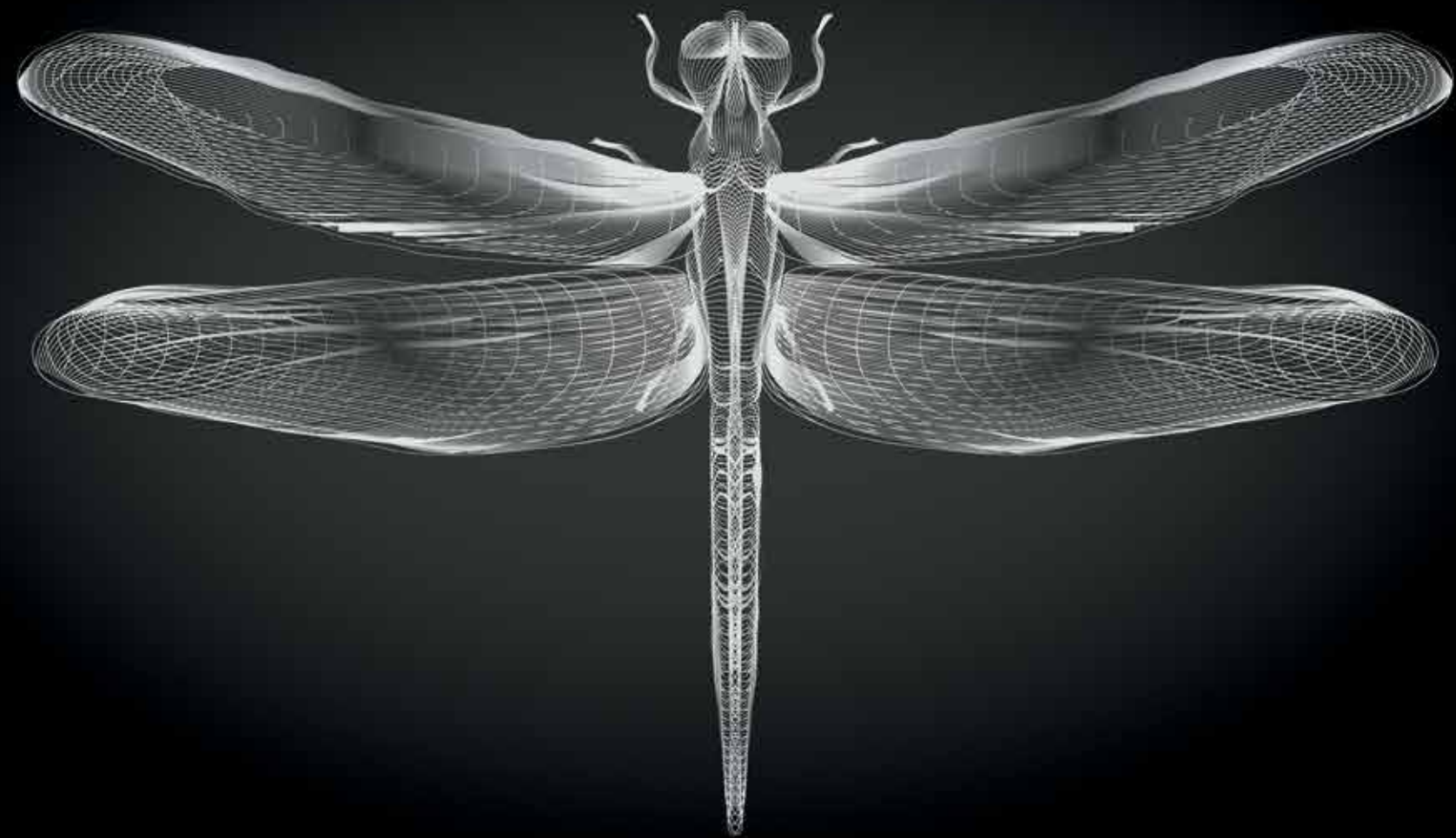
SENSE THE ALFA ROMEO GRIP



The return to rear-wheel drive and to precise and direct steering, perfectly sums up sportiness and comfort for pure driving pleasure.

Roadholding is guaranteed by the Alfa™ Link suspension system, made entirely from aluminium, which ensures excellent dynamic behaviour and unique handling: at the front, the new double-wishbone system with semi-virtual steering axles keeps the wheels perfectly perpendicular to the road, even on the most challenging bends, while at the rear, the Multilink system with four and a half links is the best combination of lateral grip and comfort level, even on uneven road surfaces. Moreover, thanks to its compactness, it ensures the maximum rear passenger room.

The Alfa Active Suspension™ system dynamically adjusts the suspension response according to the driving conditions and the mode selected with the Alfa™ DNA selector. This technology allows a softer shock absorber setting for a more comfortable ride, or a more rigid setting for more precise sporty driving.



NATURALLY ENGINEERED
FOR MINIMUM WEIGHT

The new Giulia is designed to provide an excellent power to weight ratio thanks to the extensive use of ultra-light materials: carbon fibre for the driveshaft and aluminium for the hood, doors, engine, suspension and brake calipers. These choices translate to greater efficiency and better driving dynamics, for a considerable reduction in fuel consumption and emissions.



80%

Aluminium Parts
in the front suspension

45%

Aluminium Parts
in the rear suspension

BORN INTUITIVE

The Giulia's safety systems employ today's most advanced technology to support intuitive driving with different levels of intervention, minimising risks and preventing dangerous situations.

Forward Collision Warning (FCW) with Autonomous Emergency Brake (AEB) with pedestrian recognition and active braking. This device warns the driver of a potential head-on collision, using acoustic and visual signals and activating the braking system. In urban driving, at speeds below 50 km/h, it can also detect the presence of pedestrians in the car's path and stop on its own in case the driver is unable to actively intervene.

Integrated Brake System (IBS). The new Alfa Romeo Giulia is the first sedan in its segment to be equipped with this innovative electromechanical device, which combines the functions of the brake system with those of stability control. With the highly sensitive brake pedal, the system eliminates any vibration in the case of ABS braking. It responds powerfully and rapidly, and can stop the car from 100 to 0 km/h in a space of just 38.5 metres.

Lane Departure Warning (LDW). A video sensor installed on the windscreen recognizes the road surface markings and alerts the driver with audio and visual warnings, if the driver moves out of the lane involuntarily or fails to use turn signals.

Blind Spot Monitoring (BSM). The system continuously monitors the rear blind spots on both sides of the vehicle, using two radars set in the rear bumper.

Any potential risk is signaled with lights on the exterior mirrors, warning the driver of obstacles at the sides of the vehicle.

Rear Cross-Path Detection monitors the area behind the car during reversing manoeuvres. The device signals the approach of other vehicles at a right angle to the car and at speeds lower than about 35 km/h.

Alfa Romeo Giulia obtained 5 EuroNCAP stars with a score of 98%, establishing it as the safest car ever for adult protection.



FORWARD COLLISION WARNING (FCW)
AUTONOMOUS EMERGENCY BRAKE (AEB)
INTEGRATED BRAKE SYSTEM (IBS)
LANE DEPARTURE WARNING (LDW)
BLIND SPOT MONITORING (BSM)
REAR CROSS-PATH DETECTION





A HUMAN-MACHINE SYMBIOSIS

The connection between the Giulia and its driver has no boundaries. Thanks to the on-board technology: the next-generation infotainment system with Rotary Pad command, Alfa™ Connect 3D Nav with three-dimensional high-resolution maps, the 8.4" central display and 7" TFT screen included in the on-board instruments.

CLEVER INFOTAINMENT



GIULIA

Giulia is available with the 2.0 Turbo Petrol 148kW AT engine.

GIULIA

- 16" alloy wheels
- Aluminium brake calipers
- Halogen headlights
- Fog lights
- LED rear lights
- Chrome exhaust tip
- Black interior air vent bezels
- Black cloth seats
- Automatic dual zone climate control
- Steering-wheel-mounted start button
- Leather steering wheel
- Cruise control/Speed limiter
- Dusk sensor
- Rain sensor
- Electric parking brake
- Alfa™ D.N.A
- Autonomous Emergency Brake (AEB) with pedestrian detection
- Start & Stop
- Forward Collision Warning (FCW)
- Integrated Brake System (IBS)
- Tyre inflation kit
- Lane Departure Warning (LDW)
- 3,5" TFT colour instrument cluster
- Connect 6.5" (radio, MP3, aux-in, Bluetooth, 8-speaker audio, rotary pad)



Black dashboard - black cloth upholstery



Black dashboard - optional black leather upholstery

GIULIA SUPER



Giulia Super trim is available with the 2.0 Turbo Petrol 148kW AT engine.

GIULIA SUPER

IN ADDITION TO GIULIA:

- 17" alloy wheels
- Adaptive cruise control w/stop
- Privacy tinted glass
- Safety entry pack
- Climate upgrade pack
- Chrome surround moulding
- Leather and cloth seats (in 3 colour variants)
- Two-tone dashboard and door panels
- Aluminium door sills
- Paddle shift
- Rear-view camera



Black leather and cloth seats



Tobacco leather and cloth seats



Red leather and cloth seats

GIULIA STILE

LIFE SHOULDN'T
BE REDUCED TO
BLACK AND WHITE

GIULIA STILE PACK
(6CN)

IN ADDITION TO GIULIA SUPER:

- Sport Pack
- Convenience Pack
- Uconnect 8.4 Navigation
- Leather seats
- 18" alloy wheels
- Power seats
- Run flat tyres



Tobacco leather seats (OPT)



Black leather seats (OPT)

INTELLIGENT MULTIMEDIA



MEDIA ENTERTAINMENT

Maximum connectivity with a full range of devices. Using the USB/AUX/SD ports and Bluetooth connection, you can listen to all your favourite music on board. The graphics and system logic are designed to make the steering-wheel-mounted controls and rotary pad the perfect extensions for full control of all infotainment functions.



CONNECT 3D NAV 8.4

Based on the latest-generation TomTom platform, the Connect 3D Nav 8.4 sat-nav system is optimised for simple, intuitive use. The interactive contextual content makes the system the perfect guide on every trip, and the thoughtfully structured display of information makes everything clear at a glance.



20.5°C
12:36 PM R

MY CAR
▼ 1 2 3 4 5 6

19.5°C
The Sound of Rebir



MYCAR

Vehicle status constantly monitored. Vital information relayed at all times, from technical data to servicing requirements. The graphics combine flat and three-dimensional elements to facilitate use and contribute to a gratifying, full-immersion experience of the world of Alfa Romeo.



EFFICIENT DRIVE

Efficient Drive is a useful aid for all types of driver, from the newly qualified to the most advanced. Intuitive graphics provide a qualitative analysis of driving style and offers useful information and tips for more efficient driving.

PACK

SPORT PACK (8LQ)*

- Aluminium inserts on dashboard, central tunnel and door panels
- Sport leather steering wheel
- Aluminium sport pedal
- 25W bi-xenon headlights

SPORT PACK AFS (8LR)*

- In addition to Sport Pack:
- 35W bi-xenon headlights + Adaptive Frontlight System (AFS)
- Headlight washers



PANORAMIC SUNROOF (400)

- Tinted glass panoramic roof with electric opening



DRIVER ASSISTANCE PACK (6UN)

- Rear-view camera with dynamic grid lines
- Front/rear parking sensors



*Only on SUPER

PACK

DRIVER ASSISTANCE PACK PLUS (8M4)

- Rear-view camera with dynamic grid lines
- Front/rear parking sensors
- Rear-view mirror with auto-dimming
- Door mirrors with auto-dimming
- Automatic high beam assistant
- Blind spot detection with rear cross-path detection



CLIMATE PACK UPGRADE (8LV)

- Odour detection device
- Heat-reflecting windscreen
- Rear seat climate control air vents
- Refrigerated storage compartment on dashboard
- Rear USB port
- Second front USB port



SOUND THEATRE (8PK)

- Advanced audio system (10 speakers, incl. subwoofer)
- Ambient lighting



SOUND THEATRE BY Harman/Kardon® (8PJ)*

- 900 W premium audio system (14 speakers, incl. subwoofer)
- Ambient lighting



CONVENIENCE PACK (8MK)

- Exterior door handle lights
- Keyless entry (front doors)
- IP storage compartment on driver side
- Sun visor with illuminated vanity mirror (driver)



PACK

LIGHTING PACK (8LZ)

- Headlight washers
- 35W bi-xenon headlights + Adaptive Frontlight System (AFS)



POWER SEATS PACK (8M8)

- 6-way power driver seat (with memory)
- 6-way power passenger seat



LUSSO PACK (8T4)*

- Reconstituted Grey Oak: Real wood insert
- Superior leather seats
- Heated front seats
- 7" Colour TFT Instrument Cluster
- Leather Ip, upper door and central armrest
- Luxury steering wheel
- Power folding mirrors
- 8-way power driver memory, 8-way pass seats + 4-way lumbar adjuster
- Chrome Dlo
- Heated steering wheel
- Bright speaker grille ring



LUSSO PACK (8LU)*

- Superior leather seats
- Heated front seats
- 7" colour TFT instrument cluster
- Leather Ip, upper door and central armrest
- Walnut Wax (Real wood insert)
- Luxury steering wheel
- Power folding mirrors
- 8-way power driver memory, 8-way pass seats + 4-way lumbar adjuster
- Chrome Dlo
- Heated steering wheel
- Bright speaker grille ring



SOLID



Alfa Red - 414



Alfa White - 217



Alfa Black - 601

METALLIC



Vulcano Black - 408



Silverstone Grey - 620



Vesuvio Grey - 035



Lipari Grey - 409



Montecarlo Blue - 092



Monza Red - 093



Stromboli Grey - 318



Imola Titanium - 082

WHEELS



421 -16" alloy rims



420 - 17" spoke alloy rims



433 - 17" burnished alloy rims with 7 holes



439 - 17" silver turbine alloy rims



4WQ - 18" turbine alloy rims



55E - 18" silver turbine alloy rims



68P - 18" burnished alloy rims with 5 holes



4AY - 18" spoke alloy rims



499 (212 + 8T4 Pack)
Black dashboard with walnut wood inserts
Black leather upholstery



485 (212 + 8LU Pack)
Black dashboard with oak wood inserts
Black leather upholstery



577 (212 + 8LU Pack)
Tobacco leather-trimmed dashboard with oak wood inserts
Tobacco leather upholstery



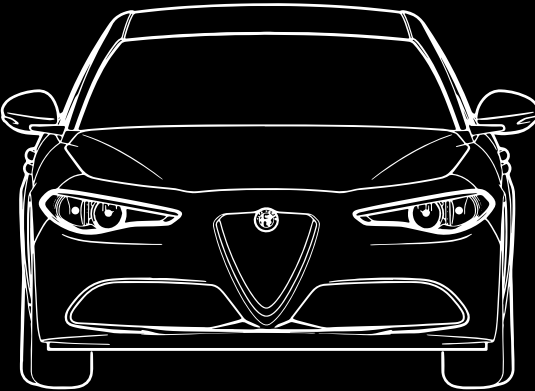
562 (212 + 8LU Pack)
Red leather-trimmed dashboard with oak wood inserts
Red leather upholstery

COLOUR COMBINATIONS

	GIULIA		SUPER									
SEATS	CLOTH	LEATHER	CLOTH/LEATHER			LEATHER			LUSSO PACK			
Colour	Black 578	Black 433	Black 009	Red 437	Tan 412	Black 433	Red 411	Tan 409	Black Oak 485	Black Walnut 499	Red Oak 562	Tan Oak 577
SOLID												
414 Alfa Red (opt 5CA)	●	●	●	●	●	●	●	●	●	●	●	●
217 Alfa White (opt 5B2)	○	○	○	○	○	○	○	○	○	○	○	○
601 Alfa Black (opt 5CF)	○	○	○	○	○	○	○	○	○	○	○	○
METALLIC												
408 Vulcano Black (opt 58B)	○	○	○	○	○	○	○	○	○	○	○	○
620 Silverstone Grey (opt 210)	○	○	○	○	○	○	○	○	○	○	○	○
318 Stromboli Grey (opt 5CC)	○	○	○	○	○	○	○	○	○	○	○	○
092 Montecarlo Blue (opt 5CD)	○	○	○	-	○	○	-	○	○	○	-	○
035 Vesuvio Grey (opt 5CE)	○	○	○	○	○	○	○	○	○	○	○	○
082 Imola Titanium (opt 5DN)	○	○	○	-	○	○	-	○	○	○	-	○
093 Monza Red (opt 5DP)	○	○	○	-	-	○	-	-	○	○	-	-
409 Lipari Grey (opt 5DQ)	○	○	○	○	○	○	○	○	○	○	○	○

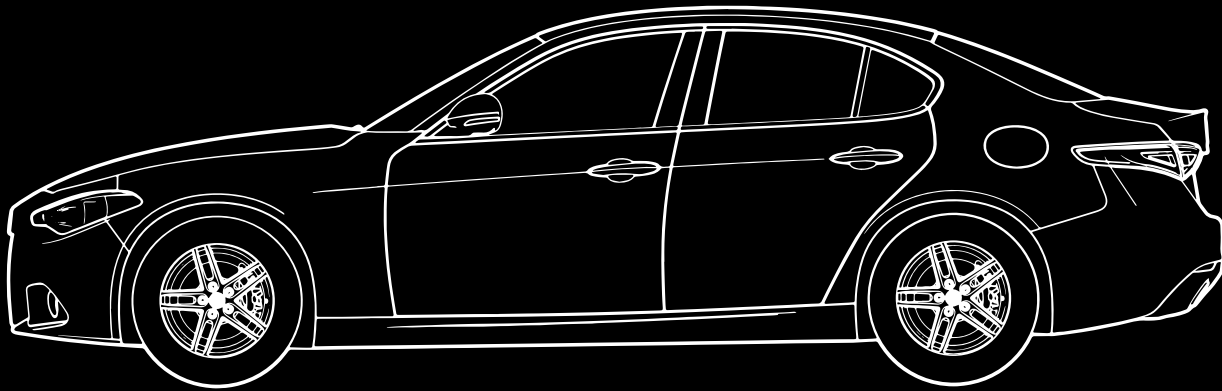
WHEELS

	GIULIA	SUPER
421 - 16" alloy rims with silver double spokes	•	-
420 - 17" spoke alloy rims	◦	•
433 - 17" burnished alloy rims with 7 holes	-	◦
439 - 17" silver turbine alloy rims	-	◦
4WQ - 18" turbine alloy rims	-	◦
55E - 18" silver turbine alloy rims	◦	◦
68P - 18" burnished alloy rims with 5 holes	-	◦
4AY - 18" spoke alloy rims	◦	◦



1860

2024



795

2820

1028

4643

1436

TECHNICAL DATA



TECHNICAL	2.0 Turbo Petrol 148kW AT
Transmission	8-speed automatic
No. of cylinders, layout	4, in line
Valves per cylinder	4
Displacement (cm³)	1,995
Max. power: kW @ rpm	147 @ 5,000
Max. torque: Nm @ rpm	330 @ 1,750
Acceleration: 0-100 km/h (sec)	6.6
Top speed (km/h)	235
CONSUMPTION AND EMISSIONS	
Emission standard	EURO 6b
Fuel consumption - urban (l/100km)	8.4
Fuel consumption - extra-urban (l/100km)	4.6
Fuel consumption - combined (l/100km)	6.0
CO ₂ emissions (g/km)	138
WEIGHT AND DIMENSIONS	
Kerb weight STD A (kg)	1,429
Height (mm)	1,436
Width (mm)	2,024
Length (mm)	4,643
Wheelbase (mm)	2,820
Load capacity (l)	480

STANDARD/OPTIONAL

EXTERIOR	GIULIA	SUPER
Solid paint finish - Alfa Red	●	●
Solid paint finish	○	○
Metallic paint finishes	○	○
LED rear lights	●	●
25W bi-xenon headlights	-	○
35W bi-xenon headlights with AFS	P	P
Black brake calipers	○	○
Red brake calipers	○	○
Yellow brake calipers	○	○
Rear parking sensors	○	●
Front and rear parking sensors	P	P
Electrochromic door mirrors	P	P
Power folding mirrors	○	○
Privacy glass	○	●
Athermic windshield	P	P
Chrome DLO	○	●
Black Gloss DLO	-	○
Tinted glass sunroof	○	○

INTERIOR	GIULIA	SUPER
Black cloth seats	●	-
Black leather seats	○	-
Leather and cloth seats	-	●
Black, tobacco and red leather seats	-	○
40/20/40 folding rear seat with integrated armrest	○	○
Leather steering wheel with multi-function controls and built-in starter button	●	●
Sport leather steering wheel with multi-function controls and built-in starter button	-	P
Aluminium steering column shift paddles	○	●
Aluminium scuff plate	-	●
Aluminium sports pedals	-	P
Electrochromic rear-view mirror	○	○
Passenger-side sun visor with illuminated mirror	●	●
Driver-side sun visor with illuminated mirror	P	P
Third rear headrest	●	●
Rear climate control vents	P	P
Refrigerated dashboard storage compartment	P	P

AUDIO/PHONE/AUXILIARY	GIULIA	SUPER
Connect 6.5" (Radio, Mp3, Aux-in, Bluetooth)	●	-
Connect 3D Nav 8.4" (Radio, 3D Sat-Nav, Mp3, Aux-in, Bluetooth)	-	○
7" TFT colour instrument cluster	-	○
Rear parking camera with dynamic grid lines	P	P
USB and AUX IN port	●	●
Rear USB port	P	P
Second front USB port	P	P

SAFETY/TECH	GIULIA	SUPER
Passenger seat airbag disable	●	●
Forward Collision Warning (FCW)	●	●
AEB Autonomous Emergency Brake	●	●
Lane Departure Warning (LDW)	●	●
Blind Spot Monitoring with Rear Cross-Path Detection	P	P
Alfa™ Active Suspension	-	○

MISCELLANEOUS	GIULIA	SUPER
Evo Start and Stop	●	●
Remote central locking	●	●
Keyless entry	P	P
Perimeter and volumetric alarm system	○	○
Rain sensor for windscreen wipers	●	●
Puncture-proof tyres	○	○
Tyre pressure monitoring system (TPMS)	●	●
Tyre repair kit	●	●
Trunk hooks	○	○
Cargo net	○	○
Smoker's kit	○	○
User Handbook	●	●

Standard ● Optional ○ Not available - Dependent on pack P





La meccanica delle emozioni

DISCLAIMER:

The information contained in this brochure is provided as is and without any warranties of any kind, whether expressed or implied, including but not limited to, implied warranties of satisfactory quality, fitness for a particular purpose and/or correctness. The contents of this brochure is for general information purposes only and does not constitute advice. Fiat Group Automobiles South Africa (Pty) Ltd does not represent or warrant that the information and/or specifications contained in this brochure are accurate, complete or current and specifically stipulate that certain vehicle details and specifications contained in this brochure may differ in available models. Therefore, Fiat Group Automobiles South Africa (Pty) Ltd makes no warranties or representations regarding the use of the content, details, specifications or information contained in this brochure in terms of their correctness, accuracy, adequacy, usefulness, timeliness, reliability or otherwise, in each case to the fullest extent permitted by law.